

DEPARTMENT OF HOUSING AND URBAN DEVELOPMENT

ADMINISTRATION, OPERATIONS AND MANAGEMENT

**OFFICE OF SUSTAINABLE HOUSING AND COMMUNITIES**

The mission of the Office of Sustainable Housing and Communities (OSHC) is to create strong, sustainable communities by connecting housing to jobs, fostering local innovation, and helping to build a clean energy economy.

In order to better connect housing to jobs, the Office will work to coordinate Federal housing and transportation investments in order to reduce transportation costs for families and improve housing affordability and access to regional employment, educational and other opportunities. By ensuring that housing is located near job centers and affordable, accessible transportation, we will help to reduce infrastructure costs and support investments that save energy and increase access to housing and employment opportunities.

In order to foster and encourage local innovation, OSHC administers two sustainable communities grant programs, a research and evaluation program, a capacity building grant program, and staffs the Department's involvement in the Federal Partnership for Sustainable Communities (the Partnership) with the Department of Transportation (DOT) and Environmental Protection Agency (EPA) to better coordinate Federal programs with a goal of removing Federal barriers, better utilizing existing Federal resources and providing capacity building and analytic tools to help communities realize their own visions for building more sustainable regions.

In addition, the Office will help contribute to building a new clean energy economy by working with other Federal agencies, HUD program offices, states and local communities, and industry partners to catalyze innovation and develop strategies to reduce energy consumption in the residential sector. These innovations will help reduce Federal energy expenditures, create new private sector green jobs, and assist regions in their energy efficiency efforts reducing the nation's overall dependence on foreign oil.

There are two primary initiatives that comprise the work of the Office of Sustainable Housing and Communities (OSHC): the Sustainable Communities Initiative and the Sustainable Housing Initiative.

The objective of the Sustainable Communities Initiative is to stimulate more integrated and sophisticated local and regional planning to guide state, metropolitan, and local investments in economic development, transportation and housing, as well as to challenge localities to undertake zoning and land use reforms that facilitate recovery of the real estate market and support private-sector community reinvestment. This Initiative has four main tasks.

First, the Office partners with our counterparts in the Department of Transportation (DOT) and the Environmental Protection Agency (EPA) to offer Regional Integrated Planning and Implementation Grants. Through this partnership we seek to catalyze a new generation of integrated metropolitan transportation, housing, land use and energy planning, using state of the art data, analytic tools and Geographic Information Systems. Second, the Initiative funds Community Challenge Planning Grants to provide a local complement to the regional planning initiative, enabling multi-jurisdictional partnerships to update policies, codes, tools and critical capital investments needed to achieve sustainable and inclusive development. Third, the Initiative supports capacity-building through a grants program and a best-practices clearinghouse designed to support both grant recipients, as well as other communities interested in implementing innovative planning strategies. Finally, the Office, in collaboration with HUD's Office of Policy Development and Research, provides funding for a joint HUD-DOT-EPA research effort designed to advance transportation and housing linkages on a number of levels.

Through the Sustainable Housing Initiative, the Office is also continuing its close coordination with the Department of Energy on several initiatives related to energy efficiency and green building. These initiatives are essential to achieving long-term financial savings that result from reduced building energy consumption – both for individual households and property owners, as well as for the Federal Government. A core element of staffing this Initiative is assisting the Department's implementation of HUD's energy-related Annual Performance Goal. The Office will continue to support and serve as program lead for achieving this goal, set at 159,000 energy efficient and green housing units in fiscal years 2010 and 2011.

The Department is on track to significantly exceed this goal, and is establishing a new 2-year goal through fiscal year 2013. In fiscal year 2013, HUD will continue to coordinate with key program offices, as well as with DOE and EPA, in the development of an Energy Management and Tracking System, initially proposed for fiscal year 2012. The OSHC fiscal year 2013 request includes \$8 million for research and program evaluation that includes support for the energy cost saving planning and tracking measures proposed under the Sustainable Housing Initiative.

OSHC provides training and helps to facilitate partnerships between HUD Sustainability Officers and other field staff at DOT, EPA, USDA, FEMA and other agencies to facilitate interagency coordination that supports community goals, and reduce Federal barriers and navigate Federal regulations. In addition, the Office provide administrative support to these officers that assist communities and states who are seeking Federal information on best practices, funding opportunities and problem solving to utilize existing Federal programs to implement local and regional plans that advance the Partnership's six Livability Principles.

SUSTAINABLE HOUSING AND COMMUNITIES

|                                   | FY 2010<br>Actual | FY 2011<br>Actual | FY 2012<br>Enacted | FY 2013<br>Request | Increase/Decrease<br>compared to<br>FY 2012 |
|-----------------------------------|-------------------|-------------------|--------------------|--------------------|---|
| Personal Services                 | \$1,045,762       | \$2,406,592       | \$2,323,000        | \$2,477,000        | \$154,000                                   |
|                                   |                   |                   |                    |                    |   |
| Non-Personal Services:            |                   |                   |                    |                    |   |
| Travel                            | 70,376            | 100,185           | 249,991            | 278,000            | 28,009                                      |
| Transp. Of Things                 | 17,779            | -                 | -                  | -                  | -   |
| Printing                          | 985               | \$3,552           | 2,984              | 1,000              | (1,984)                                     |
| Other Services                    | 65,792            | 77,380            | 51,025             | 19,000             | (32,025)                                    |
| Supplies                          | 8,155             | 7,454             | -                  | 2,000              | 2,000                                       |
| Subtotal Non-Personal<br>Services | \$163,087         | \$188,571         | \$304,000          | \$300,000          | (\$4,000)                                   |
|                                   |                   |                   |                    |                    |   |
| Total                             | \$1,208,852       | \$2,783,734       | \$2,627,000        | \$2,777,000        | \$150,000                                   |
| FTE                               | 6.1               | 15.5              | 17.1               | 18.0               | 0.9   |

OSHC is requesting 18.0 FTE's for fiscal year 2013 and \$2.7 million; this is an increase from fiscal year 2012 of 0.9 FTE and a total reduction of non-personnel service of \$4 thousand.

### Personnel Compensation

The Office of Sustainable Housing and Communities has a unique specialized need of skill sets. These FTEs need to perform inherently governmental functions as well as policy and collaboration responsibilities that involve specialized technical experience in planning, green building and energy tracking. With OSHC spearheading HUD's "cross-agency collaboration(s)", the skill sets required are different from many HUD offices. For this reason, OSHC has a higher cost per FTE compared to HUD's average FTE cost. In addition, the five Presidential Management Fellows staffed in OSHC will all graduate from the program during fiscal year 2012, automatically increasing their grade levels upon successful completion of the program. This incurred staffing cost creates an increase in FTE and is reflected in the fiscal year 2013 S+E request.

### Travel

The Office is requesting funding for travel and transportation. This includes travel needed for site visits that will be required to monitor the office's 143 existing grantees and an estimated 75 new grants in fiscal year 2013. The Office also has significant travel needs to respond to speaking requests that support the capacity-building of people and institutions in regions, cities and neighborhoods to plan for the efficient use of public funds and to support rigorous evaluation of the grant programs.

### Printing & Reproduction

OSHC is requesting funding for Printing and Reproduction. In addition to basic needs such as business cards, grant documentation and envelopes, the office will need to print its new publications that are being developed in fiscal year 2012.

### Other Services

OSHC is requesting funding in Other Services. This reflects an anticipated need for additional contractor support for both professional consultation services for our energy programs and for clerical and administrative services to support our Director and allow program staff to direct their energies toward critical, mission-focused work.

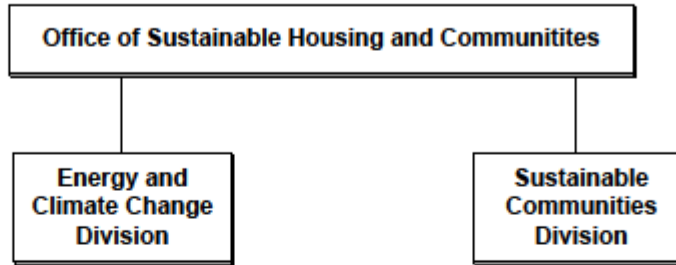
### Supplies & Materials

OSHC will need basic office and printer supplies for day-to-day office operations as well as supplies for outreach efforts and grant management filing.



## Office of Sustainable Housing and Communities

---



December 16, 2009