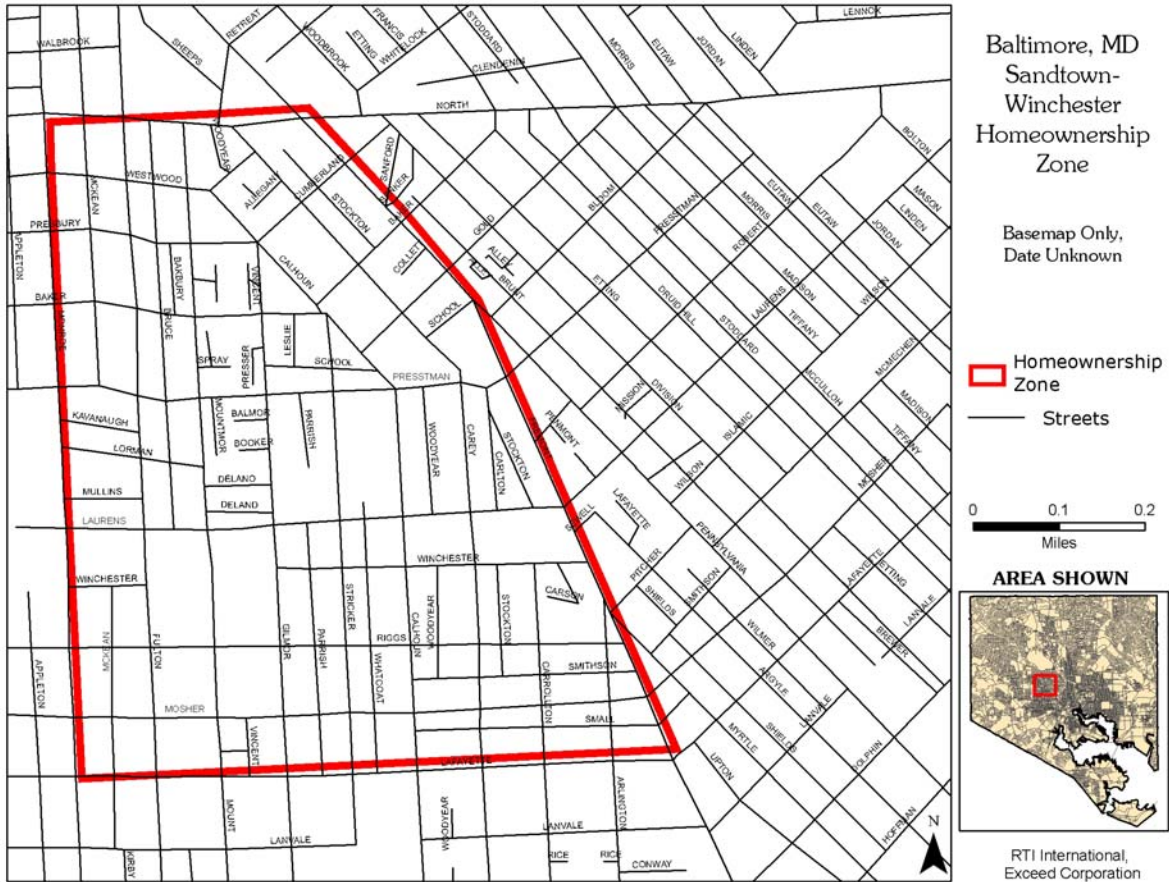


Baltimore, Maryland Sandtown Winchester Square Homeownership Zone Map

The Sandtown Winchester Square Homeownership Zone (HOZ) is a 72 square block area in historic West Baltimore. It is bounded by North Avenue on the north, Pennsylvania Avenue on the east, Lafayette Avenue on the south, and Monroe Street on the west.



Grant	Section 108	All HUD Funds	Approval Date	Contract
\$5,240,000	\$6,685,789	\$16,800,927	4/8/97	8/4/00
	Units Proposed	Current Units	Completed	Completion Date
Scattered	322	236	236	2/06/07
New		200	200	
Rehabilitated		36	36	
Sold	Number of Units Sold to Homebuyers With 80% of AMI	Number of Units Sold to Homebuyers With 81-120% of AMI	Number of Units Sold to Homebuyers With More than 120% of AMI	Percentage of Units Sold to Low-Mod Homebuyers
	236	236		100%

AMI = area median income.