

Louisville, Kentucky Park DuValle Homeownership Zone Map

The Park DuValle Homeownership Zone (HOZ) is a 191 acre area in Louisville's West End. It is bounded by Russell Lee Park on the north, Algonquin Park on the east, Algonquin Parkway on the south, and Interstate 264 on the west. It is located six miles from the central business district.



Grant	Section 108	All HUD Funds	Approval Date	Contract
\$4,600,000	\$5,000,000	underway	4/8/97	10/31/98
	Units Proposed	Current Units	Completed	Completion Date
Compact Area	300	307	307	December 2010
New	300	307	307	
Rehabilitated				
Sold	Number of Units Sold to Homebuyers With 80% of AMI	Number of Units Sold to Homebuyers With 81-120% of AMI	Number of Units Sold to Homebuyers With More Than 120% of AMI	Percentage of Units Sold to Low-Mod Homebuyers
307	158	63	86	51%

AMI = area median income.



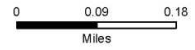
Louisville, KY
 Park DuValle
 Homeownership
 Zone

1998

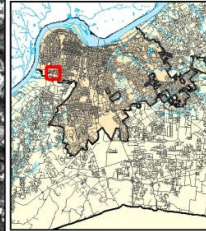
- Homeownership Zone
- City Limits

Neither BTS nor TIGER streets align with imagery. Only street names are shown. Detailed streets were not purchased from the city.

Aerial Imagery Date: March 29, 1998.
 Imagery provided by USGS.



AREA SHOWN



RTI International,
 Exceed Corporation